

MvixBOX

Ultra-High Performance 2-Bay SATA NAS server

Quick Guide



<http://www.mvix.net>

Table of Contents

Chapter 1.	Introduction
1.1	Introducing the Mvixbox
1.1.1	Overview
1.1.2	Main Functions
1.1.3	Configuration
1.2	Do's and Don'ts
1.3	Safety & Precautions
1.4	Technical Specifications
1.5	Package Contents
1.6	Getting Familiar with your Unit
1.7	LED and Button

Chapter 2.	Basic Setup
2.1	Installing an Internal Hard Disk
2.2	Connections
2.2.1	Network Cable Connection
2.2.2	USB Host
2.2.3	Power On and Button
2.3	S/W Installation
2.4	Internet Connections
2.4.1	Using IP Router
2.4.2	DDNS(Dynamic Domain Name Server)
2.5	Setup Wizard(Change setting during using a Mvixbox)

Appendix.	
A.	Upgrade
B.	Application Guide
C.	FAQ
D.	Troubleshooting
E.	Limited Warranty
F.	Copyright & Legal Attributions
G.	Contact Information
H.	Glossary

1.1 Introducing the Mvixbox

1.1.1 Overview

Ultra-High Performance 2-Bay SATA NAS server

Congratulations on your new Mvixbox! Your Mvixbox is a powerful file server that's as easy to use as a hard drive. With its straightforward configuration GUI, anyone can easily configure the Mvixbox's settings. The Mvixbox is a sophisticated Network Attached Server, designed with Web-Disk, BitTorrent sharing, dynamic website hosting, and data backup.

The ultra-high-density file storage capability gives business users as well home bloggers the freedom to store twice as much data and be able to access it via the internet - practically anywhere, anytime. The Mvixbox is a fast, reliable Linux-based server, with two built in hard drive bays that will enable you save money on online storage and traffic. This user manual is intended to assist you in configuring your new Mvixbox. Due to continual product improvement some of the images and text in this manual may vary slightly from the images and text displayed by your Mvixbox. These changes are minor and should not affect the ease of setup adversely. As time passes, future user interfaces, updated software, and later versions of this manual will be made freely available for download at our web site: www.mvix.net

If you run into difficulties or need additional help, feel free to contact our technical support.



◆ Wireless Connectivity at 802.11g, 802.11n(USB dongle)

Your Mvixbox is your own private server with up to 2 TB of storage. All your stored data will be available to your contacts and friends to upload/download once you have granted them access privileges.

◆ Web Disk

File & Folder Upload and Download, Folder Sharing (Read only, Write only, Read & Write), Secure Folder(Data Encryption), Group&Guest ID, Blog, BitTorrent, Notice, Board, Notes.

◆ Sleeker Design

Beautifully redesigned, Mvixbox features a sleek, new professional solid enclosure.

◆ System Requirements

PC or MAC with USB 2.0 port, SATA x 2, Gigabit LAN port

Windows Vista or Windows XP Home or Professional with Service pack 2 or MAC OSX(Tiger or Leopard)

◆ Network Capable Decoding

Supports Streaming of media files on the network.

Chapter 1. Introduction

1.1 Introducing the Mvixbox

1.1.2 Main Functions

1.1.2.1 Main Screen

The intuitive icon type menu is very easy to use even for first time users.

Personal information of user and major functions can be viewed at a glance. Also, users can access the latest information immediately in notice or board section.



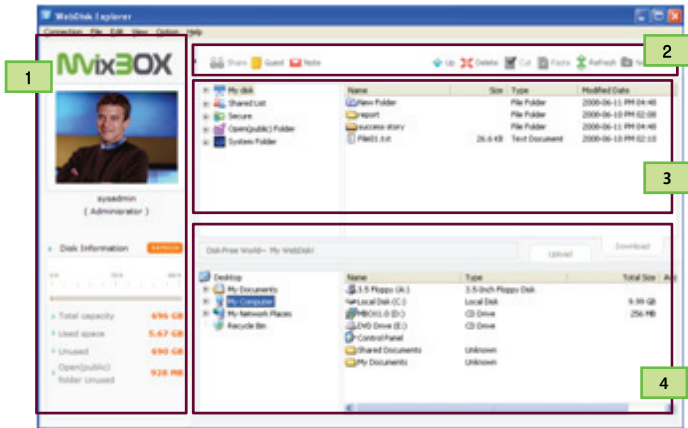
The main page after login consists of the following:

1. Product Logo: Click product logo to move to main page at all times.
2. Personal & Disk Information
 - Basic Image: Image can be changed as desired by the user in 'my profile'.
 - My Profile: Password and basic image, etc. can be changed.
 - Basic capacity-related information is provided.
3. Quick Launcher Download : Download WebDisk Connector from Quick Launcher Download. You can execute WebDisk Explorer or Windows Explorer without website login.
4. Main function icons .
 - Web Disk Explorer, Web Explorer, Window Explorer, Blog, BitTorrent, RSS Menu and so on.
 - Administrator function can be accessed via the sysadmin login. Service Request function is only for other users.
5. Newly updated Patch files and contents are displayed in the notice and board.

Chapter 1. Introduction

1.1.2.2 WebDisk Explorer

The simplest and the most convenient interface for file sharing and management is provided. Each of top and bottom area is divided into remote Mvixbox and local PC area. Mvixbox also supports the function to upload /download multiple files/ folders at a single time by drag & drop.



1. WebDisk Explorer can be only used in Windows operating system. So if you want to use another OS, please use Web Explorer or Windows Explorer.
2. WebDisk Explorer is similar to Windows explorer. It is largely divided into ① **personal and Disk information** ② **menu** ③ **WebDisk Side File/ Folder list** and ④ **local PC file system navigation**.

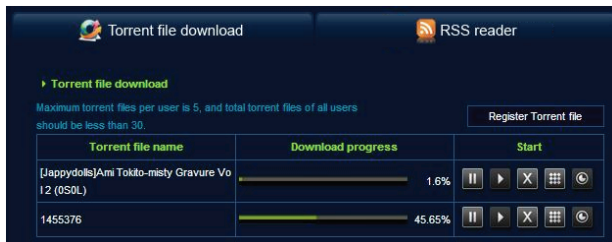
1.1.2.3 Web Explorer



1. Web Explorer manages My Disk by using a web browser without the need for additional programs. Therefore, Web Explorer can be used in all operating systems such as Windows ,Macintosh and Linux.
2. Web Explorer is similar to Web Disk explorer. It is largely divided into ① **a folder tree**, ② **menu** and ③ **File/ Folder list** parts. 6

Chapter 1. Introduction

1.1.2.4 BitTorrent & RSS



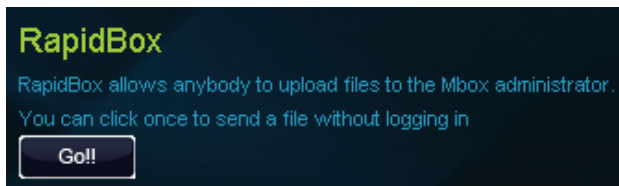
BitTorrent is a P2P service for faster file download. To download a file via Bittorrent, you first need to have a torrent file.

1.1.2.5 Blog



Using blog, Mvixbox primarily provides personal community space. Secondly, it can also be used as work journal, etc.

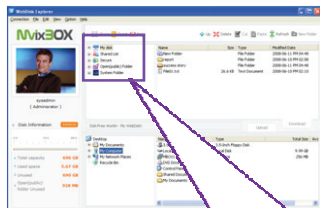
1.1.2.6 RapidBox



1. Rapid Box allows unauthorized users to send files to 'sysadmin' . It is a convenient way to get a files from unregistered users.
2. Input the storing folder name you are uploading to. The present date and time will be input for basic details.
3. After you choose file and click the upload button, the file will be uploaded according to your requested folder name in RapidBox folder manager.
4. You can upload maximum 8 by using ADD button, you can upload by 2 GB total capacity at once.

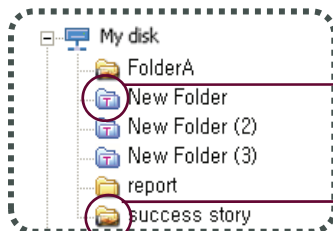
Chapter 1. Introduction

1.1.2.7 Folder definition



Mvixbox provides folders of various functions to enable convenient file sharing and management.

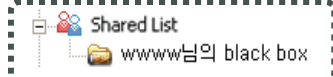
Private WebDisk Folder



New folder and corrected folder of folder contents is changed folder shape as T shape.

Shared folder that I approve to share to other user.
Approach Authority Establishment per group, user, and temporary user.
Authority Establishment for read, write, read/write.

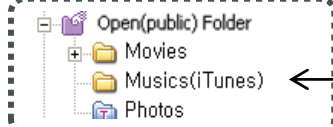
Shared folder that other user approved me to share



**Folder for hacking protection
Store by using encryption**

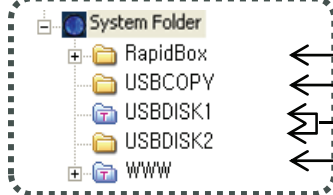


Folder that all user can share



Linked with iTunes Program

sysadmin exclusive folder (only use for sysadmin)



Upload exclusive folder, Upload for user without account.

Backup folder for USB Auto copy.

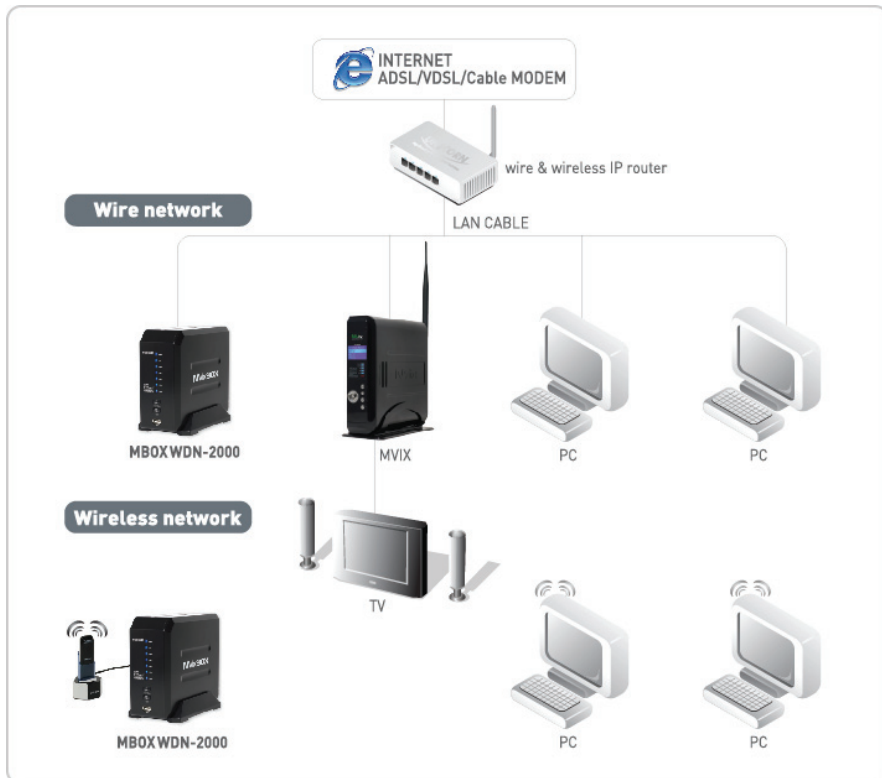
USB exterior equipment
It appears when the equipment is connected.

Homepage default folder
Private homepage hosting when your put homepage files in this folder.

Chapter 1. Introduction

1.1 Introducing the Mvixbox

1.1.3 Configuration



1.2 Do's and Don'ts

Do's

CAUTION

1. Back up your system periodically to avoid any potential data loss. Unicorn disclaims any responsibility of all sorts of data loss or recovery.
2. Should you return any components of Mvixbox package for refund or maintenance, make sure they are carefully packed for shipping.

Any form of damages due to improper packaging will not be compensated.

Don'ts

1. Mvixbox can operate normally in the temperature of 0°C-40°C and relative humidity of 0%-90%. Please make sure the environment is well-ventilated.
2. The power cord and devices connected to Mvixbox must provide correct supply voltage (60W, 90-264V).
3. Do not place Mvixbox in direct sunlight or near chemicals. Make sure the temperature and humidity of the environment are in optimized level.
4. Unplug the power cord and all connected cables before cleaning. Wipe Mvixbox with a damp towel. Do not use chemical or aerosol to clean Mvixbox.
5. Do not place any objects on top of the Mvixbox as this may cause overheating and interfere with it's normal operation.
6. Use the flat head screws in the product package to secure the hard disks into the Mvixbox.
7. Do not place Mvixbox near any liquids.
8. Do not place Mvixbox on any uneven surfaces as to avoid it falling off and getting damaged.
9. Make sure the voltage is correct in your location when using Mvixbox. If you are not sure, please contact the distributor or the local power supply company.
10. Do not place any object on the power cord.
11. Do not attempt to repair your Mvixbox under any conditions. Improper disassembly of the product may expose you to electric shock or other risks.

For any enquiries, please contact the distributor.

1.3 Safety & Precautions

Please read the following Limitations and Usage Precautions before using your Mvixbox.

- ◆ We strongly recommend backing-up your data or media files stored on the Mvixbox-HDD. Power surge, HDD-failure, accidental deletions are common causes of data loss. Place your Mvixbox away from magnetic sources.
- ◆ Mvixbox supports 3.5" SATA Hard Disk Drives only. Do not use IDE Disk. Kindly ensure that the jumper setting on your Hard-disk Drive (HDD) is set to MASTER or SINGLE before installing it in the Mvixbox Player. Some HDDs (depending on the manufacturer) may work with the SLAVE or CABLE SELECT (CS) jumper combination.
- ◆ Data of hard disk mounted on the product are the sole responsibility of user. We hold no responsibility for damages of hard disk data occurred due to external impact or negligence of user .
- ◆ Legal responsibility for violation of copyright or intellectual property right using this product lies in the user.
- ◆ The network capability of the Mvixbox player is designed to work with Windows-based Operating System (OS) and its Network Sharing capability. Depending on the OS and Network environment, Network-Sharing may not work reliably. This issue can be caused by a variety of factors beyond the functionality of the Mvixbox.
- ◆ The supplied cables and accessories are recommended for customized best performance of the Mvixbox. Using any other (after-market) cables or accessories may not provide best performance.
- ◆ In order to unplug your Mvixbox, press the **ShutDown** button during about 7 sec, before removing cables turn off the power.
- ◆ Do NOT open the unit and service or modify the basic assembly. Do NOT modify the firmware of the Mvixbox unit. Improper or unauthorized repair will VOID your warranty coverage.

Chapter 1. Introduction

1.4 Technical Specifications

HDD		SATA HDD X 2 (not included)
I/O Interface		USB port X 2
		USB Copy Button, Release Button
LAN	Wireless	802.11 g / b (USB Type) (optional extra)
	Wired	Gigabit LAN X 1
Network		DHCP Server
		Dynamic DNS – *.mviix.net
Network File Protocol		CIFS, AFP, NFS, WebDAV
Client Platform		Windows, Linux, MAC
Additional Useful Protocol		FTP with SSL / TLS, Telnet, SSH, SecureSMTP
Web Server		Apache, MySQL, SQLLife, PHP
		Port # : 80
USB Function		USB Flash Disk / Memory Auto Copy
		Volume Expansion (Owner : admin)
		Wireless LAN
		Printer Server
Multimedia		BitTorrent
		Blog
		iTunes Music Server
		UPnP Media server
WebDisk		File & Folder Upload / Download
		Share Folder(Read, Write, Read/Write)
		Secure Folder(Data Encryption)
		OPEN(Public) Folder – All Users Sharing
		Notice, Board, Note
		Link Mail for Big sized File
		File Link
		Mvixbox Share(upload link)
		Group/Guest ID
		Port # : 80(default), 8080
PC Backup		Full / Incremental Backup
		Backup Schedule(Daily, Weekly, Monthly)
		Backup Setup Wizard
System Management		Web-based Administration
		E-mail Alert
		LED display / Alarm Buzzer
		Multi-User Account Mgmt.
Language		Multi Language support

Chapter 1. Introduction

1.5 Package Contents



Main Unit (Mvibox NAS)



Cradle



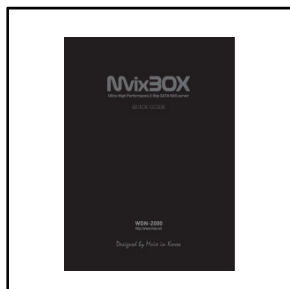
Ethernet Cable



Power cable & AC adapter



Mvibox Installation CD



Quick Setup Guide

1.6 Getting Familiar with your Unit



1.7 LED and Button

1. LED

- Power : LED is turned on when power is connected.
- LAN : LAN is turned on when LAN cable is connected. This LED is turned on whenever there is data input/ output on wired LAN.
- Status : Status is turned on when booting is completed. This LED is turned on during system booting or system shutdown.
- USB1 : USB1 is turned on when there is a device connected to front USB port. This LED is turned on during copy to front USB.
- USB2 : USB2 is turned on when there is a device connected to rear USB port. This LED is turned on during copy to rear USB port.
- HDD1 : This LED is turned on whenever there is data input/ output at hard disk of Disk Bay 1. Check details in [Administrator]-[System Management]-[Disk Management] menu.
- HDD2 : This LED is turned on whenever there is data input/ output at hard disk of Disk Bay 2. Check details in [Administrator]-[System Management]-[Disk Management] menu.

2. Button

- Release / Shutdown Button : When this button is pressed for 1 sec and released, USB memory device is cleared from system with a **double beep**. System is turned off by pressing this button for app. 5 sec until a single beep.
- Copy / Reset Button : When this button is pressed for 1 sec and released, copy starts from USB memory device with a single beep. **The copy is cleared with a double beep.** System is turned off and on again by pressing this button for app. 5 sec until a single beep.
- When Release/Shutdown button and Copy/Reset button is pressed at once until 5 beep, Network setting is initialized.

3. Beep Sound

- Single Beep : When system recognizes button click, when system successfully recognizes the newly connected USB device (external memory device, wireless LAN and printer, etc.)
- 2 Consecutive Beeps : When USB copy is completed, when copy is successfully cancelled by clicking release button during copy
- 5 Consecutive Beeps : When USB copy fails

4. Disk Bay

- Disk Bay 1 : This is disk inlet close to the rear right power button. Make sure to insert disk here when mounting only 1 disk.
- Disk Bay 2 : This is disk inlet far from the rear left power button. Insert disk here when expanding disk.

Chapter 2. Basic Setup

2.1 Installing an Internal Hard Disk



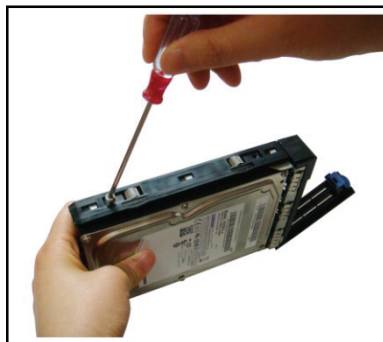
Pull the handle of one of two bays.
(It has two bay. You can install two hard disks)



Get into the bracket and push the hard disk
into the bracket.



Install the hard disk into the bracket.



Prepare and fasten the HDD to the bracket
with two screws (supplied).

Chapter 2. Basic Setup

2.1 Installing an Internal Hard Disk



Push the installed hard bracket into the Mvixbox Device.



Close the installed hard bracket with a "click" sound



Insert the power cable to power jack of back side



Insert the LAN cable to LAN port of back side

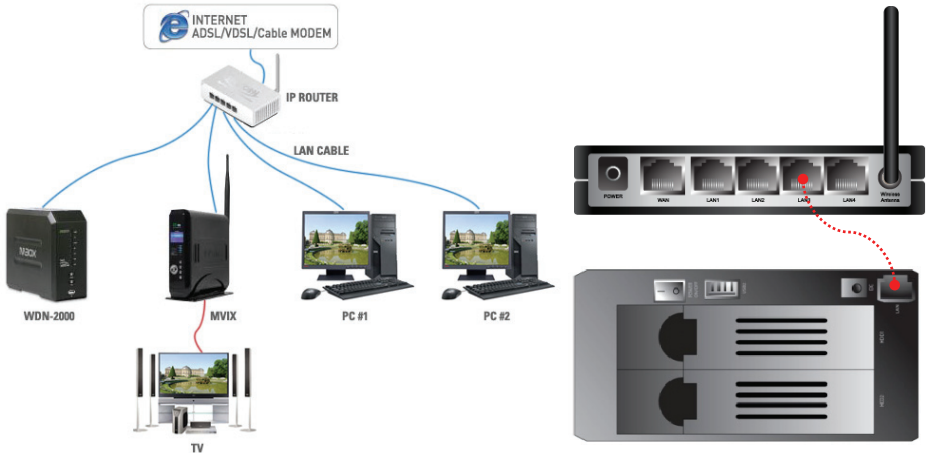
Chapter 2. Basic Setup

2.2 Connections

2.2.1 Network Cable Connection

NOTE : Either wired or wireless network can be used. They cannot be used simultaneously. Therefore, even when both wired and wireless are connected to the network, only one can be used at any one time. Network choice can be set in network setup menu.

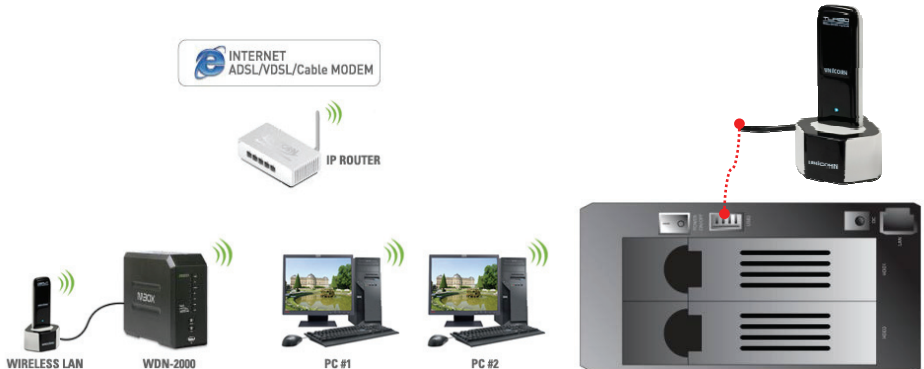
[Wired Network Connection]



[Wireless Network Connection]

Connect the USB LAN Card to USB LAN Card Interface at Mvixbox. Upon completing the setup as described below, the Mvixbox will acquire the IP address automatically from your router.

NOTE : Try to use Wireless setup in an environment with minimal interference. Avoid Wireless setup if streaming hi-def video files.



2.2 Connections

2.2.2 USB Host

NOTE : This step can be skipped if you are not using a USB device. Refer to this chapter, in case you require to use a USB device connection while using Mvixbox.

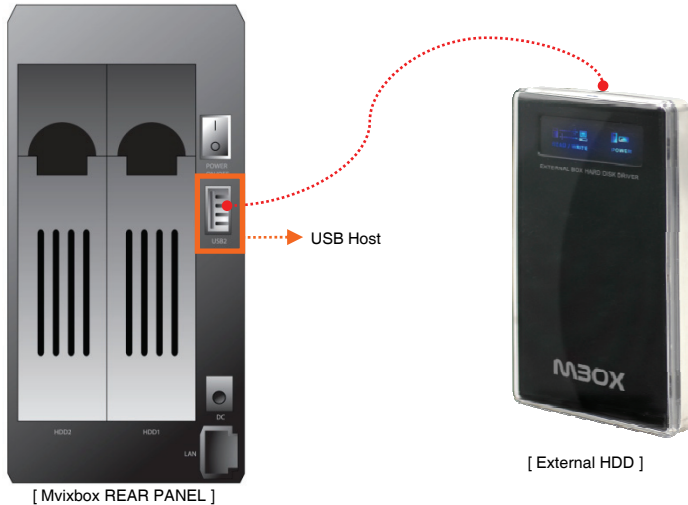
USB Host Functionality

The Mvixbox also provides a USB-host port with full speed, USB 2.0 compliant host/function processor.

USB-host (also referred to as *USB-OTG* or *USB-On-the-Go*) allows communication between two USB devices. You can connect any external storage device (e.g. Flash drive) and use files residing on these external devices.

You can even connect your Digital Camera to directly transfer digital images / pictures from the camera to the HDD residing inside Mvixbox.

◆ Some 2.5" external-HDD may require additional power to be connected to the external HDD in order for it to work reliably with the Mvixbox. Use the AC-adaptor included with your 2.5" external HDD to enable its correct use with the Mvixbox



※ External USB storage must be used after connection to PC and formatting in advance.

2.2 Connections

2.2.3 Power On and Button

1. Power LED is turned on when turning on power switch at the back.
2. Status LED blinks for app. 1 min.
3. If booting is completed, status LED is turned on.



◆ Power On

This is turned on by power switch located at the rear side of Mvixbox.

◆ Power Off

[case 1] When release/ shutdown button is pressed for app. 5 sec, beep is produced and power is turned off. When power is turned off, all LEDs are turned off.

*** Do not turn off power by using power switch at the back. Turning off power with this switch may cause data loss and breakdown of hard disk.**

[case 2] Use admin. Login - system management - system shutdown menu.

◆ Reset

[case 1] When copy/ reset button is pressed for app. 5 sec, beep is produced and reset begins.

[case 2] sysadmin login and then use the system shutdown on [Administrator]-[system management] menu.

◆ Release

Press the Release / Shutdown Button at the front of Mvixbox for about 1 seconds. It disconnect the connected external USB storage with beep sound..

◆ Copy

Press the Copy / Reset Button at the front of Mvixbox for about 1 seconds. Mvixbox will begin to copy all the data of connected external USB storage with beep sound.

2.3 S/W Installation (WebDisk Installation)

When connecting via a LAN cable, Mvixbox will attempt to assign an IP address with the DHCP server. If the DHCP assignment fails, the IP address is set to 192.168.0.199 by default..

[Connecting Network]

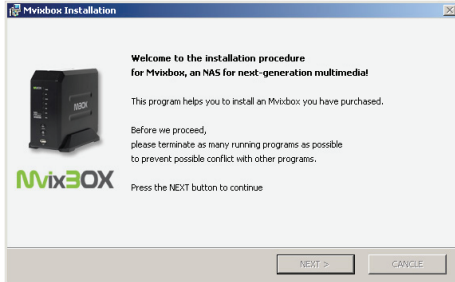
<Connecting the device to a share point or router>

1. Connect the device to a share point or router over a LAN cable.
2. Switch on the power source of the device.
3. Get an arbitrary IP address from the device.

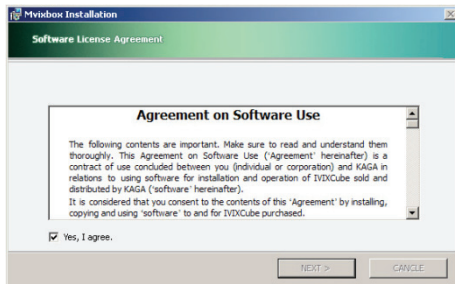
<Connecting the device directly with a PC: manual configuration of the environment>

1. Connect the device with a PC over a LAN cable (provided as an accessory to the product).
2. Set the IP address to 192.168.0.X (where X is any integer between 1 and 254, except 199)
3. Switch on the power source of the device.
4. The IP address of the device is set to 192.168.0.199.

[S/W Installation]



1. Insert the installation CD into the PC. The installation program should start by itself. If it doesn't, run 'setup.exe.'
2. Close all running programs before starting the installation.
3. In case you need to cancel the installation due to an error, press Ctrl + Alt + Del to bring up the Windows Task Manager, and terminate the installation program.
4. On the first screen, press NEXT to continue with the installation or CANCEL to stop.

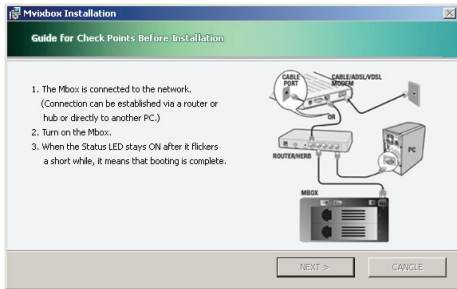


5. After you read the user agreement, check on 'Yes, I agree' and press NEXT. You can't move on to the next stage without checking on the agreement.

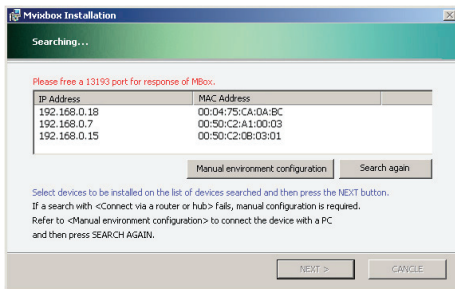
Chapter 2. Basic Setup

2.3 S/W Installation (WebDisk Installation)

[S/W Installation]



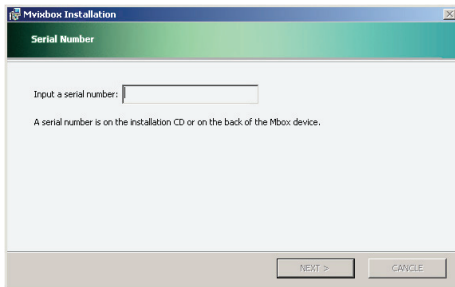
6. Make sure you are connected to the network again, and press NEXT.



7. The installation program will automatically search for devices and list them on the screen. Select the device you want to install, and press NEXT.

In case the option <Connecting the device to a share point or router> fails to search for devices, you need to make a manual configuration.

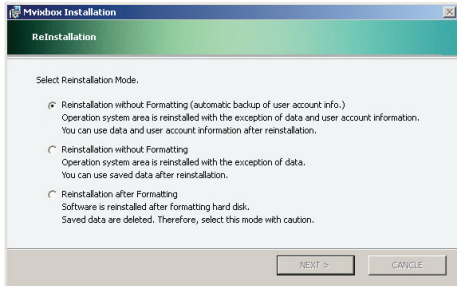
Refer to <Connecting the device directly with a PC: manual configuration of the environment> to connect the device directly with the PC, and then press SEARCH again.



8. Type in the serial number of the device and press NEXT. You can find the serial number on the bottom of the device.

2.3 S/W Installation (WebDisk Installation)

[S/W Installation]



9. This stage is applicable only for program reinstallation.

Select reinstallation mode.

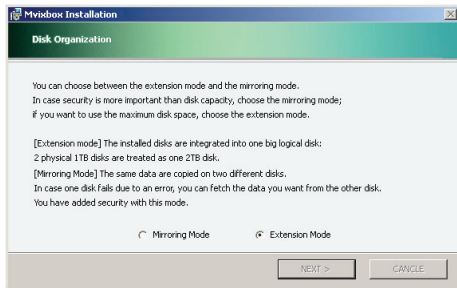
[Reinstallation without Formatting]

- Reinstallation without Formatting (automatic backup of user account info.): Operation system area is reinstalled with the exception of data saved during equipment use and user account information.
- Reinstallation without Formatting: Select this mode to reinstall software without changing data saved during equipment use.

[Reinstallation after Formatting]

Select this mode to install software after formatting hard disk. Saved data and setup information are deleted.

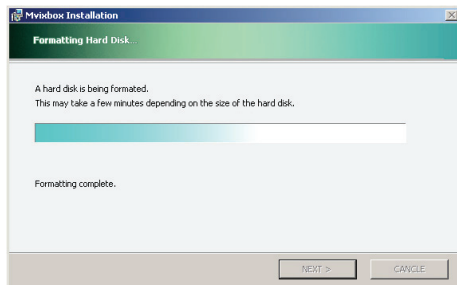
Therefore, select this mode with caution.



- Choose between the expansion mode or the mirroring mode to configure the disk. If security is more important than disk capacity, choose the mirroring mode, or if you want to use the maximum capacity of the disk, choose the expansion mode.

[Expansion mode] The installed disks are integrated into one big logical disk: 2 physical 1-TB disks are treated as one 2-TB disk.

[Mirroring mode] The same data is copied on two different disks. Should one disk fail due to an error, you can still read the data from the other disk, provided that you have selected security mode.

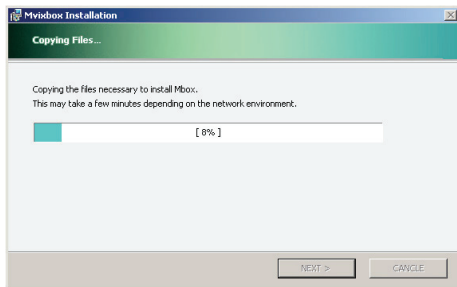


11. The hard disk is formatted, and be aware that all data in the hard disk are erased.

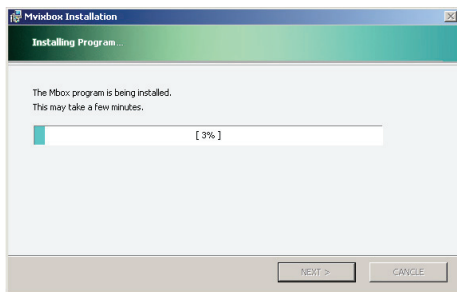
12. Press NEXT when the disk formatting is completed.

2.3 S/W Installation (WebDisk Installation)

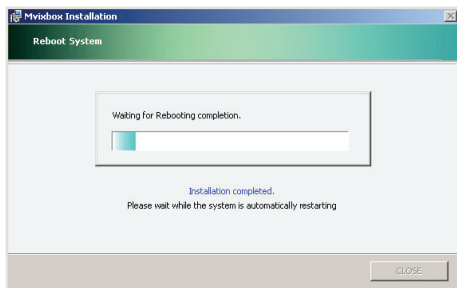
[S/W Installation]



13. The program is being copied from the installation CD. This may take a few minutes. Press NEXT when the copying is completed.



14. The copied program is installed. This may take a few minutes. Press NEXT when the installation is completed.



15. The system will reboot automatically when the installation is completed. Rebooting may take a few minutes.

2.3 S/W Installation (WebDisk Installation)

[S/W Installation]



16. When installation is completed, you are automatically directed to welcome page ([http:// IP address/welcome.php](http://IP address/welcome.php)).

Click on 'OK' after carefully reading the description of how to connect to the Internet and others.



17. The system configuration setup page will appear. Setup Password, SMTP server, Time and so on, and click Apply button.

- In case you do not setup SMTP mail server, you can't use the function relating with mail (mass size link mail, member application request mail, and extra relating function with mail).
- However you can change the setup value in [Administrator] menu.



18. The main page will appear. From now on, type [<http://IP address>] to connect.

[Log on] The administrator's ID and password are 'sysadmin' and admin, respectively. The 'sysadmin' account is given to the owner of the device, allowing them to use all administrator functions as well as ordinary user functions. [Join] To make a user account other than 'sysadmin', join the membership and get permission from 'sysadmin'. Sysadmin can permit in [Administrator]-[User Management]-[Applicant] menu. [Rapid Box] Rapid Box sends to 'sysadmin' those files uploaded by anybody. It is a convenient function to get a file from an unauthorized user.

2.4 Internet Connections

2.4.1 Using IP Router

- ※ This step can be skipped if not using the IP Sharing Router.
- ※ Not all IP routers provide this function. And also there are differences in terminologies to each router.
If you want more detail information, refer to the manual of your IP Sharing Router.

※ DMZ :

This is the function to hand over all data fed into IP router to the designated IP. Automatic connection to device is carried out by setting DMZ with internal IP of the device even if IP address of router is accessed from the outside.

※ Port Forwarding :

This is the function of mapping from external Internet to communication port of PC connected to router. In this case, mapping on ports used in web disk is required. Ports used in web disk are as of the following : 80, 8080, 13193, 13194, 2706

CAUTION

If DMZ function is supported, using of DMZ is recommended. Port forwarding setup is more complicated than DMZ.

If using both of these functions simultaneously, caution is required as port forwarding is applied prior to DMZ in general.

Setting up IP Sharing Router

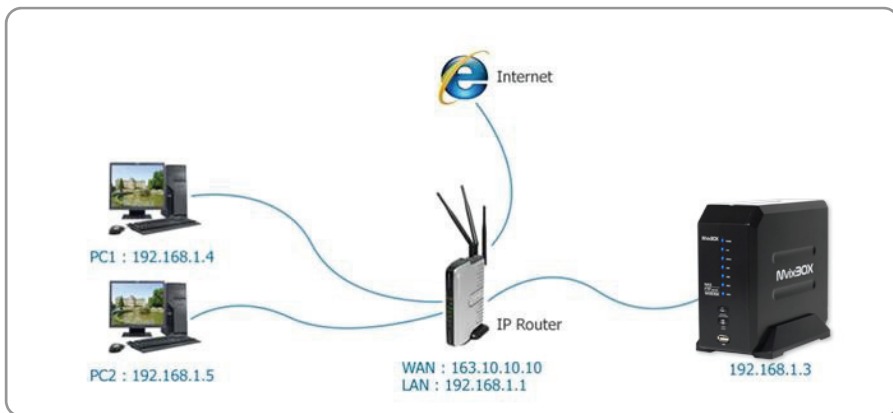
1. Connect Mvixbox to IP Sharing Router by an ethernet cable.
2. Set up "DMZ" or "Port Forwarding". (**DMZ is recommended**)
3. Connect to Mvixbox by the IP of IP Sharing Router from internet.

2.4 Internet Connections

2.4.1 Using IP Router

Example of Internet Connection with IP Sharing Router

1. Configuration



Port	Protocol	Function
80, 8080	TCP	Port of Web Server
13193, 13194	TCP	Port of WebDisk
2706	TCP	BitTorrent

2. IP Sharing Router Setting

In case you want to using DMZ function (recommended)

→ Set Internal IP(192.168.1.3) at DMZ IP address

In case you want to using Port Forwarding function

→ Set Internal IP(192.168.1.3) at IP address

→ Set Port Number with 80, 8080, 13193, 13194, 2706

→ Set Protocol

3. Checking Internet connection

Connect Mvixbox with 'http://163.10.10.10' or 'http://163.10.10.10:8080' in your PC.

2.4 Internet Connections

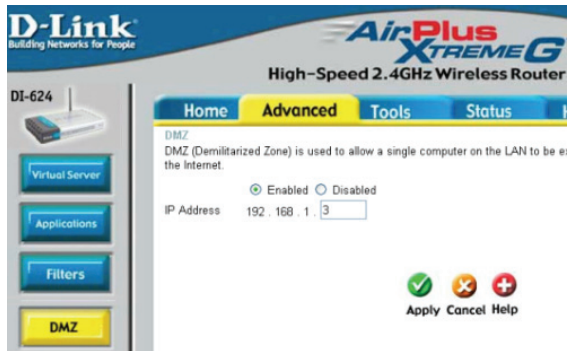
2.4.1 Using IP Router

NOTE : Below shows examples of three popular vendors. If you have other product, refer to its manual.

(Example1) In case using D-Link IP Router

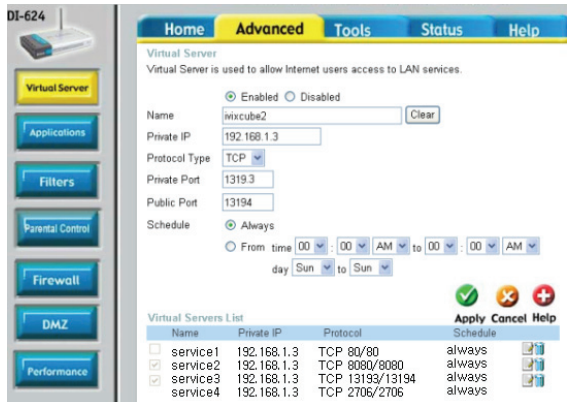
[DMZ Setting]

1. Open your web browser and enter the IP address of your router (192.168.1.1). Enter username (admin) and your password (leave blank).
2. Click the Advanced tab and then click on the DMZ button.
3. Select Enable and type in the IP address of the Mvixbox you want to use as DMZ host. (192.168.1.3)
4. Click Apply and then Continue to save the changes.



[Virtual Server (Port Forwarding) Setting]

1. Open your web browser and enter the IP address of your router (192.168.1.1). Enter username (admin) and your password (leave blank).
2. Click the Advanced tab and then click on the Virtual Server.
3. Enter the Name for your virtual service. Enter the Private IP of the Mvixbox on the LAN network that will be providing the virtual services. Choose the Protocol type used for the virtual service. Enter the Private Port number of the service being hosted by the server computer on the LAN. Enter the Public Port number that users on the Internet will use to access the virtual service. Choose the schedule of time when the virtual service will be active.
4. Click Apply and then Continue to save the changes.



2.4 Internet Connections

2.4.1 Using IP Router

(Example2) In case using LINKSYS IP Router

[DMZ Setting]

1. Open your web browser and enter the IP address of your router (192.168.1.1). Enter username (admin) and your password (leave blank).
2. Select the Enable button
3. Click the Applications & Gaming menu and then click the DMZ menu.
4. Enter the IP address of Mvixbox you want to use as DMZ host. (192.168.1.3)
5. Click Save Settings and then Continue to save the changes.

LINKSYS
A Division of Cisco Systems, Inc.

Wireless-G Broad

Applications & Gaming

Setup Wireless Security Access Restrictions Applications & Gaming

Port Range Forward Port Triggering DMZ QoS

DMZ

☒ Enable ☐ Disable

DMZ Host IP Address: 192.168.1.3

Save Settings Cancel Changes

[Virtual Server (Port Forwarding) Setting]

1. Open your web browser and enter the IP address of your router (192.168.1.1). Enter username (admin) and your password (leave blank).
2. Click the Applications & Gaming menu and then click the Port Range Forwarding menu.
3. Enter the Application name in the Application.
Enter the beginning port number in the Start.
Enter the ending port number in the End.
Choose TCP from the Protocol drop down menu.
Enter the IP address of the server computer in the IP Address.
4. Click Save Settings and then Continue to save the changes.

Applications & Gaming

Setup Wireless Security Access Restrictions Applications & Gaming

Single Port Forwarding Port Range Forwarding Port Range Triggering

Port Range Forwarding

Application Name

service1

service2

service3

service4

Start ~ End Port	Protocol	To IP Address	Enabled
80 to 80	TCP	192.168.1.3	<input checked="" type="checkbox"/>
8080 to 8080	TCP	192.168.1.3	<input checked="" type="checkbox"/>
13193 to 13194	TCP	192.168.1.3	<input checked="" type="checkbox"/>
2706 to 2706	TCP	192.168.1.3	<input checked="" type="checkbox"/>

Save Settings Cancel Changes

2.4 Internet Connections

2.4.1 Using IP Router

(Example3) in case using NETGEAR IP Router

[DMZ Setting]

1. Open your web browser and enter the IP address of your router (192.168.1.1). Enter username (admin) and your password (password).
2. Click the WAN Setup menu and then click the Default DMZ Server check box.
3. Enter the IP address of the Mvixbox you want to use as DMZ host. (192.168.1.3)
4. Click Apply and then Continue to save the changes.

NETGEAR SMARTWIZARD router manager
54 Mbps Wireless Router model WGR614 v7

WAN Setup

☒ Connect Automatically, as Required

☐ Disable SPI Firewall

☒ Default DMZ Server 192.168.1.3

☐ Respond to Ping on Internet Port

MTU Size (in bytes) 1500

NAT Filtering ☒ Secured ☐ Open

Apply Cancel

[Virtual Server (Port Forwarding) Setting]

1. Open your web browser and enter the IP address of your router (192.168.1.1). Enter username (admin) and your password (password).
2. Click the Port Forwarding/Port Triggering menu.
3. Select the Port Forwarding of the Please select the service type
4. Click the Add Custom Service button.
Enter the service name in the Service Name.
Enter the beginning port number in the Starting Port.
Enter the same port number in the Ending Port.
Enter the IP address of the server computer in the Server IP Address.

Port Forwarding / Port Triggering

Please select the service type

☒ Port Forwarding
☐ Port Triggering

Service Name Server IP Address

AIM 192.168.1.3 Add

#	Service Name	Start Port	End Port	Server IP Address
1	service1	80	80	192.168.1.3
2	service2	8080	8080	192.168.1.3
3	service3	13193	13194	192.168.1.3
4	service4	2706	2706	192.168.1.3

Edit Service Delete Service

Add Custom Service

9. Click Apply and then Continue to save the changes.

Ports - Custom Services

Service Name service4

Service Type TCP

Starting Port 2706 (1~65534)

Ending Port 2706 (1~65534)

Server IP Address 192.168.1.3

Apply Cancel

2.4 Internet Connections

2.4.2 DDNS(Dynamic Domain Name Server)

This function is very useful to most Internet users to use dynamic IP. Unlike the complicated and difficult DDNS or other domain services, users can simply create and use their own domain.

DDNS?

In general, Internet service providers allocate floating IP to subscribers. Therefore, when attempting for connection to device from the outside, IP address is changed as floating IP. In this case, dynamic domain name service (DDNS) function is useful. DDNS refers to the service that enables connection with own name rather than floating IP.

Mvixbox supports DDNS function.

However, this function must be used in conjunction with the previously mentioned DMZ or port forwarding function, if IP address of IP Sharing Router is floating IP. When connection is made with domain name without setting DMZ or port forwarding, connection is made only to IP Sharing router, not Mvixbox.

[Configuring DDNS]

- Type in the name you want to register and press SET.
- The name should be composed of a combination of alphanumeric letters. You can't use numeric letters alone. The maximum length allowed is twelve letters.
- Even if this convention is satisfied, you can't register a name already taken by another user.
- When the registration is successful, you can access with the registered name from the outside.

[Deleting DDNS]

- Press DELETE to delete a registered name.
- You can register a new name after deleting the old one.

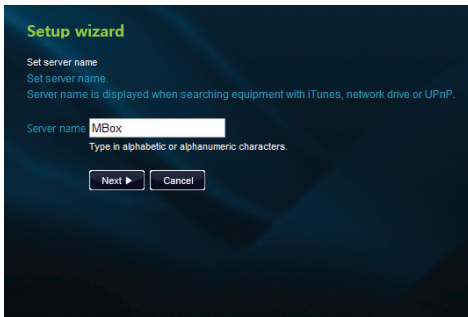
- a. Login by sysadmin ID and select [Administrator]-[Network Management]-[setting up DDNS] menu.
- b. Input host name and click OK button.
- c. If there is the same host name, you have to input new host name.
- d. For this setting, port 80 and 8080 must be opened if using sharer. (Refer to Quick Guide.)
- e. This function is renewed at Mvixbox booting or when IP is changed.
- f. To change the domain used, click [Delete] to delete the existing name. Register new name for use.
- g. External user must be connected through `http://Entered name.mvix.net:8080`.

2.5 Setup Wizard(Change Setting during using a Mvixbox)

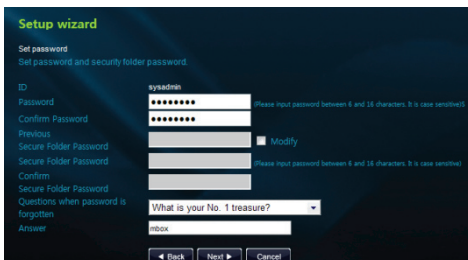
[Setup Wizard]



1. During using a Mvixbox, you can change setting with 'Setup Wizard' at Main page.



2. Set Server Name. Server name is displayed when searching equipment with iTunes, network drive or UPnP.
Press [Next] button to save the set information and proceed to the next stage.



3. Set Password.
4. Select a question and enter the answer to be used when password is forgotten. This is an essential item to initialize password, therefore must be entered cautiously.
5. Set security folder password. Security folder is used to store data more safely. It requires a password to access this folder. Press [Next] button to save the set information and proceed to the next stage.

2.5 Setup Wizard(Change Setting during using a Mvibox)

[Setup Wizard]

Setup wizard

Set mail server
Set mail server.

Server for sending mail:

Mail ID:

Mail Password:

Confirm Password:

Note: Mail-related functions (link mail and alarm mail, etc.) are not activated if SMTP mail server is not set.

◀ Back Next ▶ Cancel

6. Set mail server. If mail server is not set, mail-related functions, such as link mail or alarm mail, etc. are not activated.

Press [Next] button to save the set information and proceed to the next stage.

Setup wizard

Set time
Set time

Set current time

Date: 2008 - 9 - 4

Time: 15 - 22 - 42

NTP server

☒ None

☐ User Define:

Timezone Establishment

(GMT+09:00) Seoul

◀ Back Next ▶ Cancel

7. Set current time and time zone.

Press [Next] button to save the set information and proceed to the next stage.

Setup wizard

Set port

Change port No. in use. **Must read before setup**

Web port setting: Default

Mbox port: 8080 (Default : 8080)

Port Homepage: 80 (Default : 80)

BitTorrent port setting: Default

BitTorrent port: 2706 (Default : 2706)

Web Disk explorer port setting: Default

Web Disk explorer port: 13193 (Default : 13193)

Up/ download port: 13194 (Default : 13194)

◀ Back Next ▶ Cancel

8. Set service port. Press [Read before Setup] button to check the particulars to be noted. Press [Default] button to set service port with basic value.

Press [Next] button to save the set information and proceed to the next stage.

2.5 Setup Wizard(Change Setting during using a Mvixbox)

[Setup Wizard]

Setup wizard

Set sharer

1. Connect to Internet.

If a sharer exists, check if the sharer and MvixBOX are connected with LAN cable.
If there is no sharer, check if MvixBOX is connected to modem or switch with LAN cable.

2. Set DMZ and port forwarding in sharer (only when using sharer).

After login to sharer, set DMZ and port forwarding by using the information below.

* MvixBOX information required in sharer setup

Particulars	MvixBOX IP address	Description
DMZ host (recommended)	192.168.0.7	Enter MvixBOX IP address in DMZ host of sharer.

However, in case of using port forwarding, forward the port below by using MvixBOX IP address.
- 80, 8080, 13193, 13194, 2706 (web server, up/ download, Bittorrent port)

9. Set sharer. If not using sharer, check if Mvixbox is connected to modem or switch with LAN cable. To use sharer, port forwarding and DMZ setup are required. Press [Particulars of Port] button to refer to setup methods.

Press [Next] button to save the set information and proceed to the next stage.

Setup wizard

Setting up DDNS

Set individual host name to be used as domain name.

Setting up DDNS @mvix.net

Note :
Type in alphabetic or alphanumeric characters.
Problems may occur in DDNS operation if using 2 sharers or using a share in private IP environment. Inquire network administrator.

10. Set DDNS. DDNS is a domain to be used when logon to Mvixbox from outside. Problems may occur in DDNS operation if using 2 sharers or using a share in private IP environment. Press [Next] button to save the set information and proceed to the next stage.

A. Upgrade

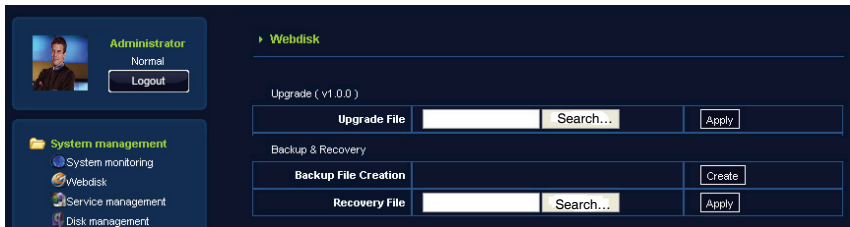
Version check

- 1) Login using by sysadmin ID (if you want more information, refer to the User Guide.
- 2) Select [Administrator]-[System Management]-[System Management] menu. At the right screen, you can find the 'Upgrade' menu and check the version of WebDisk.

** For firmware updates or news, login to your account at: <http://www.Mvix.net>

How to Upgrade

- 1) Upgrade(or debugging) patch file is download from the www.mvix.net.
- 2) Press search button to select the downloadable file.



- 3) Press apply to execute upgrade.
- 4) Upgrade patch files are not an accumulated files. Therefore, to successfully apply the latest patch file, it must be administered after sequentially patching all patch files between the current version and the latest version.

B. Application

When you want to share a music file with iTunes

- Store any MP3 file in the musics(iTunes) folder under the open folder.
- Run the iTunes program in your computer.
- The name 'Mvixbox-Musics' will show up automatically as a shared item.
- The list of MP3 files stored in the music folder of the open folder appears.
- Play back any music file you want, and you can listen to the music on streaming (i.e. without downloading the whole file).
- **This is possible only when my computer is in the same network environment.**
- File list of Mvixbox-Musics Folder will be updated automatically by every one minute..

If you want to share a USB printer at home or office

- Connect a USB printer to the device.
- Search the IP addresses of the devices on my computer and you will see a printer named 'lp.'
- Connect this printer.
- You need to install a Windows printer driver for this printer to connect.
- The driver comes with the Windows operating system or is provided by the printer manufacturer.

When you want to share Open folder and USB device with other PC or Divx Player

- Set the windows explorer to enable on [Administrator]-[System Management]-[Service Management] menu.
- Select Share mode. And then Select Open Folder or USB device what you want to share with PC or Divx Player.
- Search the network folder for a media device with the network folder search function (e.g. a Divx player).
- A folder named 'Mvixbox or Mvixbox name that is set in [System Management]' is found.
- You can play the media files in the 'home.'

When you want to have your personal homepage

- After you connect WebDisk Explorer or Web Explorer, you upload relating file with homepage on www folder, located in subordinated system folder.
- Rename the preexisting file named 'index.php' (e.g. to 'index.php_').
- In case you use Mysql, you connect sysadmin by using ssh, and you input 'mysql-u root - p mysql' There is no password. After you connect Mysql, please assign root password for mysql.
- When you enter the address of the device, you can see your homepage.
- The old page can be accessed with 'http://the device address:8080.'
- In case you make any changes of the settings of the Apache web server or PHP, on which the existing services depend, you should take precautions, and make sure you back up the existing settings before making any changes.

If you want to use a wireless LAN

- Connect to a USB port a USB wireless device compatible with the product.
- Choose 'wireless' at the network settings of the system administrator and set the network configuration.
- Be advised that you can't use the wired LAN when you choose the wireless LAN.
- As the wireless is slower and less stable than the wired LAN, use the latter if possible.

When you want to back up a USB flash drive

- Insert a flash drive into a USB port. **A signal sound will ring once.**
- Click the COPY button on the front for 1 seconds. (Clicking for 5 seconds or longer will turn the power off.)
- The files in the flash drive are copied to "system folder/USBCOPY" of web explorer.
- The copied files are generated with the current time and the same file names.
- A signal sound will ring twice when the copying is completed.
- If the disk is out of space, the signal sound will ring five times.

B. Application

If you want to expand the disk capacity with an external USB disk

- Connect a external USB disk to a USB port.
- If it is connected to a front side port, it is mounted on System folder/USBDISK1; or if it is connected to a backside port, it is mounted on System folder/USBDISK2.
- Any partitions in the disk will show up as part01,...,part0N, in order.

If you want to keep the data safe

- The device supports the RAID 1 mirroring mode.
- Choose the mirroring mode at the time of installation if you keep the data in the disk safe.
- The mirroring mode is only meaningful when you have two separate disks.
- Even when you installed in a single disk but want to add another disk later on, you can expand the disk with the disk manager to build a mirroring.
- In the mirroring, a single set of data is written on two disks for added safety.
- When one disk is in error, you can fetch the data from the other disk.
- However, unlike the linear (expansion) mode, the mirroring mode slows down the speed of writing on the disk and lets you use only half the total physical disk space.

If you want to find an IP address auto

- With UPnP
 - A Windows XP or higher comes with a function to find a UPnP device in the network environment. If the UPnP is not active, activate it.
 - The name of this device is searched automatically.
 - Click this device and the web browser will start, getting the web page of this device. You can get the IP address from the address of the web page.
- With the installation program
 - Another way to find the IP address automatically is to run the installation program.
 - The installation wizard will lead you to a part where the device is searched automatically. The IP address of the device thus found.
 - The installation program can only search for a device on the same network that the computer running the program is in. In case the search fails, see if the network setting is identical to that of the device.

If you want to make a connection with a fixed name not IP Address

- Select [Administrator]-[Network Management]-[setting up DDNS] Menu.
- Set any name you desire. When the setting is complete, you can access with the name from the outside.
- However, if the device is hooked to a internet share point, make sure that you set DMZ or port forwarding on the share point.
- When the IP address of the share point changes, you need to update the address with the DDNS manage of the system administrator.

If you are using a Mac

- With an Quick Launcher for a Mac
 - Download WebDisk Connector from Quick Launcher Download after logging on to your account on the web.
 - With a Mac access aid, you can mount the space assigned to your account to the finder with Samba or WebDAV protocol.
- With the web explorer
 - The web disk explorer is exclusively for the Windows, but the web explorer can be used on any operating system.
 - The web explorer lets you use all the functions of the web disk explorer with HTTP alone.
 - It is recommended that you use Firefox for a web browser.
- With AppleTalk
 - Try connecting the server with 'aftp://the device address/your account.'
 - When the authentication screen pops up, type in your account ID and password.
 - Your own domain is mounted to the finder.

C. FAQ

C.a Installation & Setup

Not possible to install by the installation CD provided?
<ul style="list-style-type: none">→ Check if PC and device are in the same network band. In DOS window, it can be checked if Ping is possible with the IP address of device. (For example, it is normal if response is produced after the command of "ping 192.168.1.3".)→ Check if serial number has been correctly entered.→ Check if hard disk has been correctly mounted.
Error occurred in the course of CD installation?
<ul style="list-style-type: none">→ Forcefully close installation programs in window admin.→ Reboot device and install CD again.
Installation does not proceed normally when entering serial number?
<ul style="list-style-type: none">→ Serial number input is case sensitive. Check for capital and small letters.
Can it be used from the low end of Internet sharer?
<ul style="list-style-type: none">→ Connection from outside is possible by using port forwarding function of Internet sharer..
Can it be used in the environment where Internet service is of floating IP?
<ul style="list-style-type: none">→ Connection to domain address is possible by using dynamic domain service of Internet sharer.
Connection fails?
<ul style="list-style-type: none">→ Check if network status is normal.→ In system admin, check if service status is all in execution. If not, press Execute button for restarting.
Connection to window explorer fails.
<ul style="list-style-type: none">→ Window explorer uses the same protocol as the network folder share protocol of window. Many Internet service companies restrict network folder sharing on the Internet due to security-related reasons. In this case, window explorer cannot be used.

C. FAQ

C.b system administrator (sysadmin) and user

Forgot user password?
→ After login as service administrator (sysadmin ID), click the corresponding user in user management menu to display window showing detailed information of the user. Press Initialize Password button to change password as of user ID.
Forgot administrator password?
→ Click [Initialize Password] button to display password initialization window. → Enter serial key and select the 'question to retrieve password' set at product installation and enter the answer. → Click [Initialize] button to change admin. password as 'sysadmin'
Cannot connect to window explorer in Window 98?
→ Connection is possible when Window 98 user ID is the same as the ID of device user. → Window 98 user must create login ID to be the same as the ID of device user.
Want to know the version?
→ Version is displayed at the top of screen. (ex. Ver.1.0.0.4)
Is software upgrade possible?
→ Upgrade can be done by downloading patch file. Make sure to download the patch file to suit the device version. → Upgrade can be done by applying patch file downloaded from upgrade menu after login as system administrator (sysadmin).
Want to shutdown system?
→ After login as system administrator, select Restart or Shutdown on Shutdown in [System Management] menu. Then, press OK button to safely shutdown system. Or → When Release/Shutdown button of front panel is pressed for 5 sec , System shutdown after double beep.
Is simultaneous use by multiple users possible?
→ A number of users can simultaneously connect to system and upload/download files. → However, due to window policies, only Read function is possible of files already in use when other users intend to use the files in Window Explorer.
Can Mackintosh or Linux users use it, too?
→ Mackintosh and Linux users cannot use WebDisk connector and Window Explorer. Web Explorer can be used by all. → Mackintosh users can use connector for Mackintosh users by downloading it in the screen before login.
Where is quick connector downloaded?
→ Quick Launcher for Mackintosh and Window user can be downloaded in the left down of main web page after login.

C. FAQ

C.b system administrator (sysadmin) and user

In Quick Launcher, which value must be entered as port number?
<div>→ The default value is 13193. Connection is made with default without additional input of port number.</div> <div>→ In case of port change is inevitable due to various reasons, such as firewall policy, etc., port number of server can be changed in [System Management]-[Service Management] menu.</div>
Is simultaneous connection with a single ID possible?
<div>→ Simultaneous connection with a single ID is possible. However, it is not recommended for stable operation.</div>

D. Trouble Shooting

Under no circumstances should you try to repair the system yourself, as this will invalidate the warranty. Do not open the system as there is a risk of electric shock. If a fault occurs, first check the points listed below before taking the system for repair.

1) In case Mvixbox cannot be accessed through network

- Check network status and if network port is correctly connected.
- Check if access to Mvixbox is blocked by firewall, etc.
- In case IP is not known, refer to 2) below.
- In case network setup is incorrect, refer to 3) below.
- If not falling within the previous points of 2) and 3) below, check for abnormalities in LED operation by checking LED status at the front of equipment.
- Request technical support if LED does not operate normally.

2) In case access is not possible due to forgetting IP address of Mvixbox

- Execute setup.exe (Mvixbox installer) in installation CD.
- Continuously press [Next] button until moving to Mvixbox search screen.
- If equipment is detected in Mvixbox search screen, Mvixbox can be accessed by using IP of the equipment detected.
- Refer to manual for detailed operations of setup.exe.

3) In case access to Mvixbox is not possible at all due to incorrect network setup

- Copy gbs_patch.bin file located in net_init folder of installation CD to USB stick.
- Network setup is automatically initialized when connecting USB stick to Mvixbox.
- For the initialized network IP, refer to the section of network setting in manual.

4) In case system does not operate normally because hard disk was incorrectly inserted

- In general, system operation may stop if taking out and reinserting hard disk during system operation.
- System must be reboot in this case.

E. Limited Warranty

Warranty Coverage

Mvixbox's warranty obligations are limited to the terms set forth below:

Mvixbox, as defined below, warrants this Mvixbox-branded hardware product against defects in materials and workmanship under normal use for a period of ONE (1) YEAR from the date of retail purchase by the original end-user purchaser ("Warranty Period"). If a hardware defect arises and a valid claim is received within the Warranty Period, at its option, Mvixbox will either (1) repair the hardware defect at no charge, using new or refurbished replacement parts, or (2) exchange the product with a product that is new or which has been manufactured from new or serviceable used parts and is at least functionally equivalent to the original product, or (3) refund the purchase price of the product. Mvixbox may request that you replace defective parts with new or refurbished user-installable parts that Mvixbox provides in fulfillment of its warranty obligation. A replacement product or part, including a user-installable part that has been installed in accordance with instructions provided by Mvixbox, assumes the remaining warranty of the original product or ninety (90) days from the date of replacement or repair, whichever provides longer coverage for you. When a product or part is exchanged, any replacement item becomes your property and the replaced item becomes Mvixbox property. Parts provided by Mvixbox in fulfillment of its warranty obligation must be used in products for which warranty service is claimed. When a refund is given, the product for which the refund is provided must be returned to Unicorn and becomes Mvixbox property.

EXCLUSIONS AND LIMITATIONS

This Limited Warranty applies only to hardware products manufactured by or for Mvixbox that can be identified by the "Mvixbox" trademark, trade name, or logo affixed to them. The Limited Warranty does not apply to any non-Mvixbox hardware products or any software, even if packaged or sold with Mvixbox hardware. Manufacturers, suppliers, or publishers, other than Mvixbox, may provide their own warranties to the end user purchaser, but Mvixbox, in so far as permitted by law, provides their products "as is". Software distributed by Mvixbox with or without the Mvixbox brand name (including, but not limited to system software) is not covered under this Limited Warranty. Refer to the licensing agreement accompanying the software for details of your rights with respect to its use.

Mvixbox does not warrant that the operation of the product will be uninterrupted or error-free. Mvixbox is not responsible for damage arising from failure to follow instructions relating to the product's use.

This warranty does not apply: (a) to damage caused by use with non-Mvixbox products; (b) to damage caused by accident, abuse, misuse, flood, fire, earthquake or other external causes; (c) to damage caused by operating the product outside the permitted or intended uses described by Mvixbox; (d) to damage caused by service (including upgrades and expansions) performed by anyone who is not a representative of Mvixbox or an Mvixbox Authorized Service Provider; (e) to a product or part that has been modified to significantly alter functionality or capability without the written permission of Mvixbox; (f) to consumable parts, such as batteries, unless damage has occurred due to a defect in materials or workmanship; or (g) if any Mvixbox serial number has been removed or defaced.

TO THE EXTENT PERMITTED BY LAW, THIS WARRANTY AND REMEDIES SET FORTH ABOVE ARE EXCLUSIVE AND IN LIEU OF ALL OTHER WARRANTIES, REMEDIES AND CONDITIONS, WHETHER ORAL OR WRITTEN, STATUTORY, EXPRESS OR IMPLIED. AS PERMITTED BY APPLICABLE LAW, UNICORN INFORMATION SYSTEMS LTD SPECIFICALLY DISCLAIMS ANY AND ALL STATUTORY OR IMPLIED WARRANTIES, INCLUDING, WITHOUT LIMITATION, WARRANTIES OF MERCHANTABILITY, FITNESS FOR A PARTICULAR PURPOSE AND WARRANTIES AGAINST HIDDEN OR LATENT DEFECTS. IF UNICORN CANNOT LAWFULLY DISCLAIM STATUTORY OR IMPLIED WARRANTIES THEN TO THE EXTENT PERMITTED BY LAW, ALL SUCH WARRANTIES SHALL BE LIMITED IN DURATION TO THE DURATION OF THIS EXPRESS WARRANTY AND TO REPAIR OR REPLACEMENT SERVICE AS DETERMINED BY UNICORN IN ITS SOLE DISCRETION. No Mvixbox reseller, agent, or employee is authorized to make any modification, extension, or addition to this warranty.

EXCEPT AS PROVIDED IN THIS WARRANTY AND TO THE EXTENT PERMITTED BY LAW, Unicorn IS NOT RESPONSIBLE FOR DIRECT, SPECIAL, INCIDENTAL OR CONSEQUENTIAL DAMAGES RESULTING FROM ANY BREACH OF WARRANTY OR CONDITION, OR UNDER ANY OTHER LEGAL THEORY, INCLUDING BUT NOT LIMITED TO LOSS OF USE; LOSS OF REVENUE; LOSS OF ACTUAL OR ANTICIPATED PROFITS (INCLUDING LOSS OF PROFITS ON CONTRACTS); LOSS OF THE USE OF MONEY; LOSS OF ANTICIPATED SAVINGS; LOSS OF BUSINESS; LOSS OF OPPORTUNITY; LOSS OF GOODWILL; LOSS OF REPUTATION; LOSS OF, DAMAGE TO OR CORRUPTION OF DATA; OR ANY INDIRECT OR CONSEQUENTIAL LOSS OR DAMAGE HOWSOEVER CAUSED INCLUDING THE REPLACEMENT OF EQUIPMENT AND PROPERTY, ANY COSTS OF RECOVERING, PROGRAMMING, OR REPRODUCING ANY PROGRAM OR DATA STORED OR USED WITH UNICORN PRODUCTS AND ANY FAILURE TO MAINTAIN THE CONFIDENTIALITY OF DATA STORED ON THE PRODUCT. THE FOREGOING LIMITATION SHALL NOT APPLY TO DEATH OR PERSONAL INJURY CLAIMS. UNICORN DISCLAIMS ANY REPRESENTATION THAT IT WILL BE ABLE TO REPAIR ANY PRODUCT UNDER THIS WARRANTY OR MAKE A PRODUCT EXCHANGE WITHOUT RISK TO OR LOSS OF THE PROGRAMS OR DATA.

CONSUMER PROTECTION LAWS

FOR CONSUMERS WHO ARE COVERED BY CONSUMER PROTECTION LAWS OR REGULATIONS IN THEIR COUNTRY OF PURCHASE OR, IF DIFFERENT, THEIR COUNTRY OF RESIDENCE, THE BENEFITS CONFERRED BY THIS WARRANTY ARE IN ADDITION TO ALL RIGHTS AND REMEDIES CONVEYED BY SUCH CONSUMER PROTECTION LAWS AND REGULATIONS. SOME COUNTRIES, STATES AND PROVINCES DO NOT ALLOW THE EXCLUSION OR LIMITATION OF INCIDENTAL OR CONSEQUENTIAL DAMAGES OR EXCLUSIONS OR LIMITATIONS ON THE DURATION OF IMPLIED WARRANTIES OR CONDITIONS, SO THE ABOVE LIMITATIONS OR EXCLUSIONS MAY NOT APPLY TO YOU. THIS WARRANTY GIVES YOU SPECIFIC LEGAL RIGHTS, AND YOU MAY ALSO HAVE OTHER RIGHTS THAT VARY BY COUNTRY, STATE OR PROVINCE. THIS LIMITED WARRANTY IS GOVERNED BY AND CONSTRUED UNDER THE LAWS OF THE COUNTRY IN WHICH THE PRODUCT PURCHASE TOOK PLACE. UNICORN, THE WARRANTOR UNDER THIS LIMITED WARRANTY, IS IDENTIFIED AT THE END OF THIS DOCUMENT ACCORDING TO THE COUNTRY OR REGION IN WHICH THE PRODUCT PURCHASE TOOK PLACE.

F. Copyright & Legal Attributions

All textual references, brands, logos or product names are the copyrights, trademarks or registered trademarks of their respective owners/holders. Use of these trademarks on our products, literature, communications, manuals, advertising material, press releases, etc. do not represent endorsements by the respective companies for Unicorn Information Systems Ltd.'s products, services or brand, but merely reflect their possible compatibility with our products.

❖ DivX® is a registered trademark of DivX Networks Inc. DivX is a digital video compression format based on the MPEG-4 technology. DivX files can be downloaded over high-speed lines in a relatively short time without sacrificing the quality of the digital video

❖ Dolby, AC3 are registered trademarks of Dolby Laboratories Licensing Corp.

❖ DTS is a registered trademark of Digital Theater Systems, Inc.

❖ Google is a trademark of Google Technology, Inc.

❖ HDMI is a trademark of HDMI Licensing LLC.

❖ iPod® is a registered trademark of Apple Computer, Inc.

❖ PSP™ (PlayStation Portable) is a trademark of Sony Computer Entertainment Inc.

❖ Java and all Java-based trademarks are trademarks of Sun Microsystems, Inc. in the United States, other countries, or both.

❖ UNIX is a registered trademark of The Open Group in the United States and other countries.

❖ XVID is a trademark of XVID Project

REFERENCES TO CORPORATIONS, THEIR SERVICES, PRODUCTS and BRANDS WITHOUT WARRANTY OF ANY KIND, EITHER EXPRESSED OR IMPLIED. IN NO EVENT SHALL Unicorn Information Systems, Ltd. BE LIABLE FOR ANY SPECIAL, INCIDENTAL, INDIRECT OR CONSEQUENTIAL DAMAGES OF ANY KIND, OR ANY DAMAGES WHATSOEVER, INCLUDING, WITHOUT LIMITATION, THOSE RESULTING FROM LOSS OF USE, DATA OR PROFITS, WHETHER OR NOT ADVISED OF THE POSSIBILITY OF DAMAGE, AND ON ANY THEORY OF LIABILITY, ARISING OUT OF OR IN CONNECTION WITH THE USE OR PERFORMANCE OF THIS INFORMATION. Mvixbox servers are not officially licensed or certified by DivX® Networks.

Any Mvixbox or Unicorn information systems publication may include technical inaccuracies or typographical errors. The information presented here is intended for general information only and is subject to change without notice. ALL INFORMATION IS PROVIDED "AS IS" WITHOUT WARRANTY OF ANY KIND, EITHER EXPRESSED OR IMPLIED, INCLUDING BUT NOT LIMITED TO THE IMPLIED WARRANTIES OR CONDITIONS OF MERCHANTABILITY OR FITNESS FOR A PARTICULAR PURPOSE, OR NON-INFRINGEMENT. SOME JURISDICTIONS DO NOT ALLOW THE EXCLUSION OF IMPLIED WARRANTIES, SO THE ABOVE EXCLUSION MAY NOT APPLY TO YOU.

The law provides severe civil and criminal penalties for the unauthorized reproduction, distribution, rental or digital transmission of copyrighted video and audio files. Mvixbox players are designed to assist you in backing up, storing and reproducing material which you own the copyright for or for which you have obtained permission from the copyright owner. UNLESS YOU OWN THE COPYRIGHT OR HOLD PERMISSION TO COPY FROM THE COPYRIGHT OWNER, YOU MAY BE VIOLATING COPYRIGHT LAW AND BE SUBJECT TO PAYMENT OF DAMAGES AND OTHER REMEDIES. IF YOU ARE UNCERTAIN ABOUT YOUR RIGHTS, YOU SHOULD CONTACT YOUR LEGAL ADVISOR. YOU ASSUME FULL RESPONSIBILITY FOR THE LEGAL AND RESPONSIBLE USE OF THE Mvixbox Servers. Use of Mvixbox Players, its accessories and software/firmware for illegal purposes is strictly prohibited.

G. Contact Information



<http://www.mvix.net>

Unicorn information system co. ltd

Unbo b/d 226-16, sukchon-dong, songpa-gu,
Seoul, Korea

Tel: 82 2 420 2713 (202) / Fax: 82 2 420 0317

H. Glossary

UPnP
→ UPNP allows you to find a device on the network automatically. In an operating system Windows XP or higher, enabling UPNP in a network environment lets you find a device connected in the same network automatically. When you double-click the device thus found, your web browser brings in a relevant web page automatically. You can easily find and access a device in this way without knowing its correct IP address.
iTunes
→ The ITUNES server performs a service that lets you play with your iTunes a multimedia file on a network. iTunes players in the same network recognize as shared the files of the music folder below the open folder.
Print Server
→ The printer server lets you share printers on the network. Once you connect a printer via USB and performs a search, it comes out as a network printer. Install a device driver appropriate for a printer to be used.
SSH
→ SSH is a service performing system commands like Telnet. Unlike Telnet, however, it comes with improved security. To use SSH, you need to install a SSH client on your computer.
Bittorrent
→ Bittorrent is a P2P service for faster file download. To download a file via Bittorrent, you first need to have a torrent file. Ordinarily, the default port is used, but if the port cannot be used for any special reason, you can assign an arbitrary port to it.
Network Shared Folder (Samba)
→ The Windows Explorer service lets you share a folder over the network. It comes with the user mode and the share mode. In the user mode, user authentication is necessary for getting access to a folder. In the share mode, no such authentication is needed; all data spaces can be shared or simply a USB disk or a memory space can be shared. You need to take necessary precautions as the share mode needs no authentication.
AppleTalk
→ AppleTalk is a service that lets you share a network with a Apple computer. When you establish a connection as in the following, you can access a space assigned to each user.